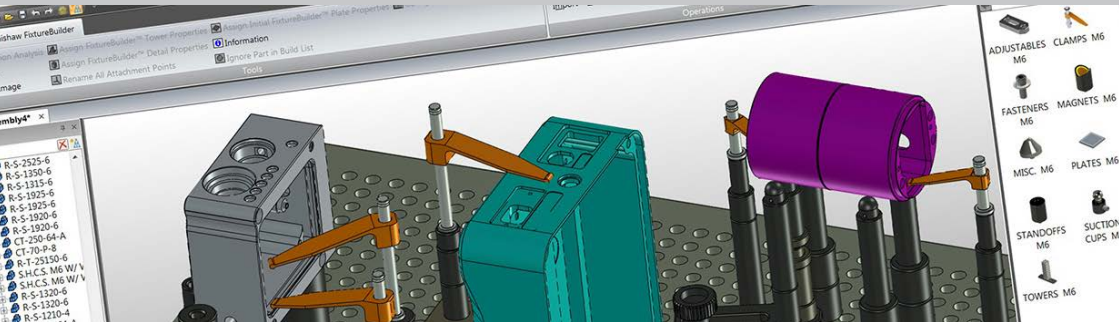


FixtureBuilder software



FixtureBuilder is a 3D software package designed to allow the creation and documentation of metrology fixturing set-ups. It can also be used to assist with offline programming.

Easy to use

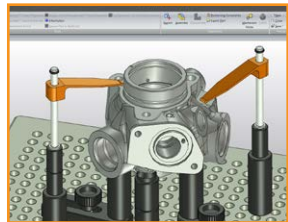
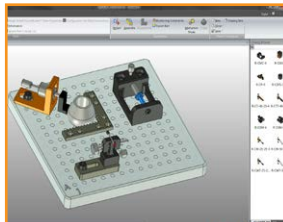
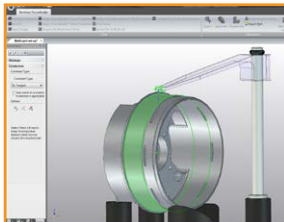
All standard base plates and fixturing components are conveniently organised into tabbed catalogues, grouped by component category and thread size.

Flexible

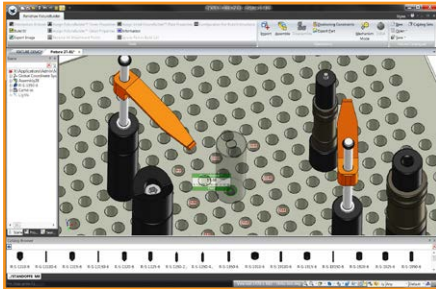
Users can create bespoke fixturing set-ups and components, e.g. custom plates, and store them in user-defined libraries for future use and reference.

Program offline

You can export the part and the fixture together. This can greatly reduce editing when programming offline in your CMM or vision software, where fixturing components could interfere with probe clearances.

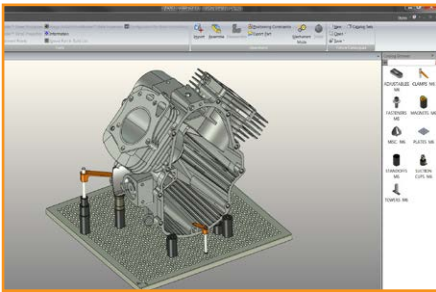


FixtureBuilder offers a wide range of customer benefits, derived from Renishaw's in-depth understanding of metrology best practice and part inspection.



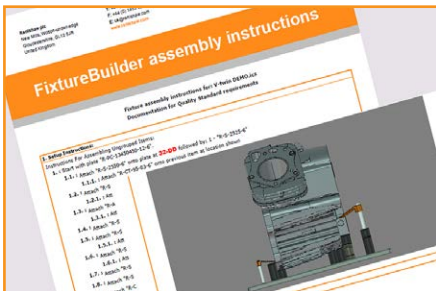
Intelligent 'Drag and drop' functionality

Simply drag and drop the components onto a plate or another component. The *SmartSnap® technology automatically aligns them while indicating the mating hole, X, Y and Z co-ordinates.



Full CAD compatibility

FixtureBuilder offers the ability to import and export most common 3D CAD files. An additional translator module for CATIA, Pro/E, UGNX, Solidworks® and Inventor® is also available for purchase.



Compliance and quality standards

The 'Build it' function is one of the key benefits available to all FixtureBuilder software users. It allows the automated production of a complete bill of materials and work instructions for every fixture set-up.

For more information visit: www.renishaw.com/fixturebuilder

*SmartSnap® is a registered trademark of IronCAD

RENISHAW HAS MADE CONSIDERABLE EFFORTS TO ENSURE THE CONTENT OF THIS DOCUMENT IS CORRECT AT THE DATE OF PUBLICATION BUT MAKES NO WARRANTIES OR REPRESENTATIONS REGARDING THE CONTENT. RENISHAW EXCLUDES LIABILITY, HOWSOEVER ARISING, FOR ANY INACCURACIES IN THIS DOCUMENT.

